

Container Seal Inspection

(WAL Security Procedure 5.3)

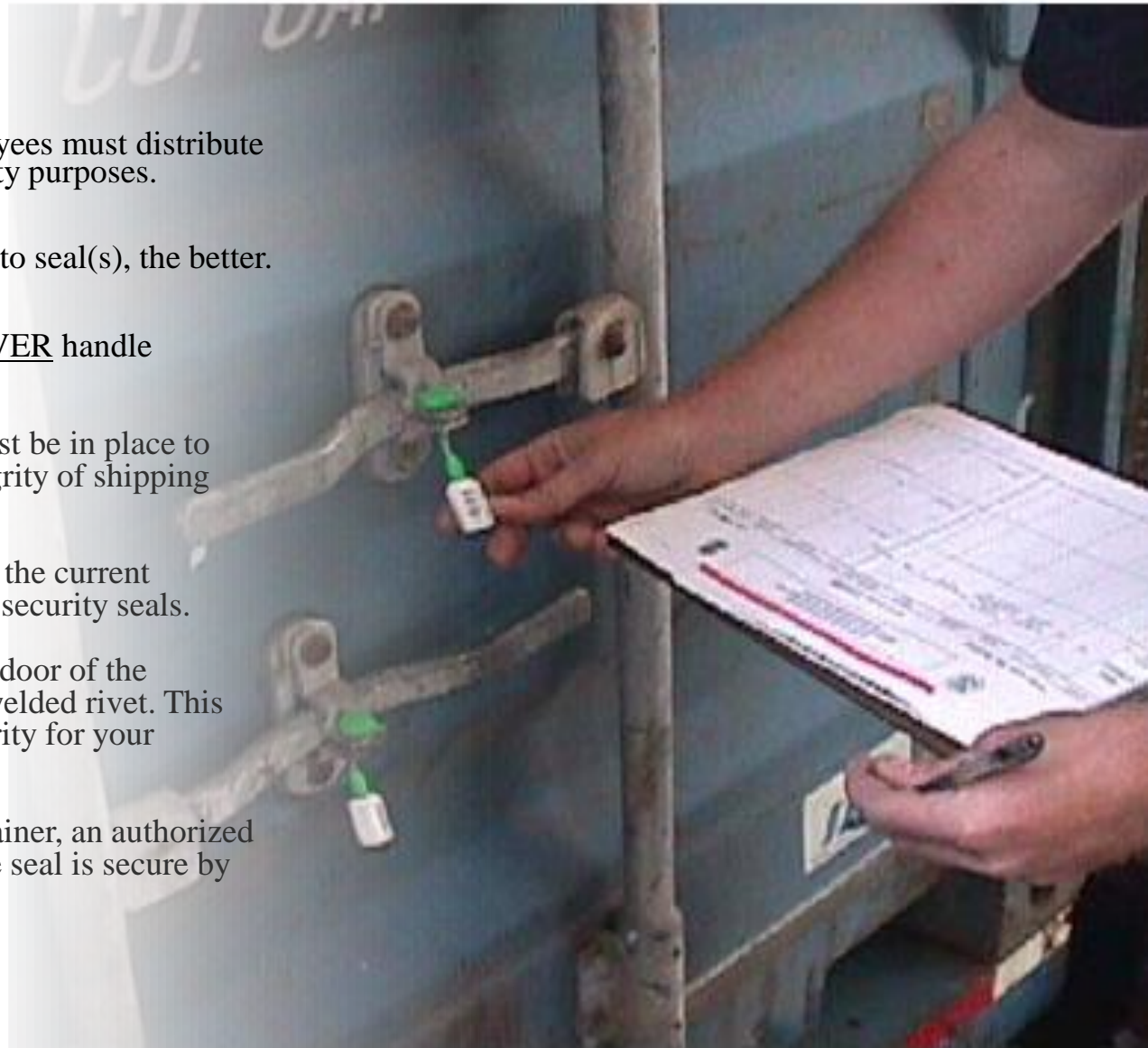
Container Seal Security

- As an importer/exporter, it is crucial to understand how container seals are to be controlled and affixed to loaded containers.
- Seal security procedures must include recognizing and reporting compromised seals and/or containers to U.S. Customs and Border Protection or the appropriate foreign authority (origin).
- If you are responsible for contracting companies that arrange the container loading, you must ensure that these companies follow all applicable seal security criteria.



Seal Affixing Process

- Only designated, authorized employees must distribute and affix container seals for integrity purposes.
- The fewer people who have access to seal(s), the better.
- Unauthorized employees must NEVER handle container seals.
- At point of stuffing, procedures must be in place to properly seal and maintain the integrity of shipping containers.
- All seals used must meet or exceed the current PAS/ ISO 17712 standards for high security seals.
- Seals should be affixed to the right door of the container on the hasp that has the welded rivet. This practice will raise the level of security for your shipment.
- After the seal is affixed to the container, an authorized employee should make sure that the seal is secure by pulling down on it.



Container Seal Inspection

(WAL Security Procedure 5.3)

Seal Affixing Process



Seals should be affixed to the right door on the hasp that has the welded rivet.



Make sure seal is affixed properly, then pull down on seal.

Container Seal Inspection

(WAL Security Procedure 5.3)

Seal Verification and Inspection

A seal inspection process should be implemented throughout the supply chain. The following V.V.T.T. Seal Inspection Process is a good example:



V - View seal & container locking mechanisms.



V - Verify seal number for accuracy.



T - Tug on seal to make sure it is affixed properly.



T - Twist & Turn seal to make sure it does not unscrew.

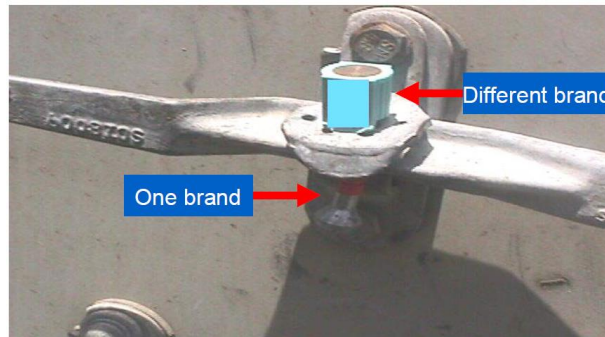
V.V.T.T Seal Verification and Inspection Process

View seal & container locking mechanisms.

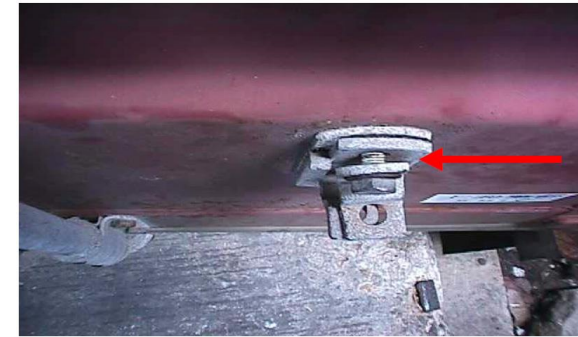
- Excessive damage to the seal or locking mechanisms must be reported to a supervisor before opening the container.



Check for excessive damage or alteration of seal.



Different brands of seals attached together.



Look for loose bolt and hasp.

V.V.T.T Seal Verification and Inspection Process

Verify seal number for accuracy.

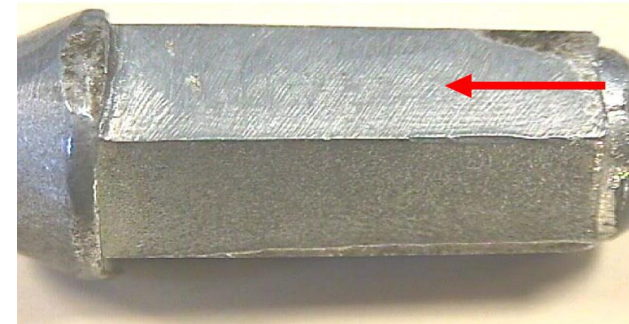
- Compare with shipping documents and look for alterations to the seal numbers.



Look for alteration to seal numbers.



Seal number manifested is correct.



Seal number has been sanded off.

V.V.T.T Seal Verification and Inspection Process

Tug on seal to make sure it is affixed properly.

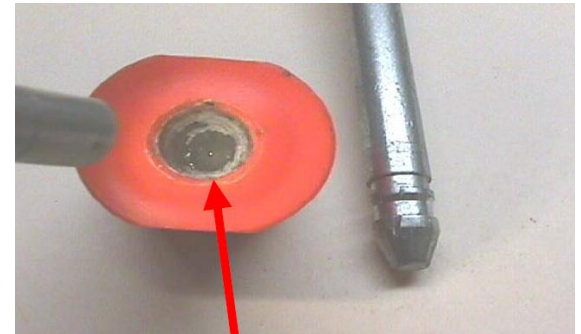
- Seals that come apart must be reported to a supervisor before opening the container.
- Human error might cause this to happen, or the container might have contraband inside.



Tug on seal to check proper affix.



Seal stem is bent and does not lock properly.



Glue inside the locking mechanism.
Seal does not lock properly.

V.V.T.T Seal Verification and Inspection Process

Twist & Turn seal to make sure it does not come off.

- Seals are threaded, so they can be unscrewed.
- These altered seals are reusable throughout the supply chain for multiple attacks.



Seal must not loosen or come off when twisted and turned.



Twisted counter-clockwise and came off.



Tampered seals.